

DONOR UPDATES



Dear Donors and Advocates,

It's the end of February and our students are hard at work. Led by their College Student Leaders, our high school juniors are learning about their college options and choices, dipping their toes into the world of financial aid, and completing their first of many scholarship applications. Supported by their mentors, our seniors are navigating the particular challenges of this year's FAFSA (see below) while celebrating college acceptances, moving on from rejections, and keeping up with their school work.

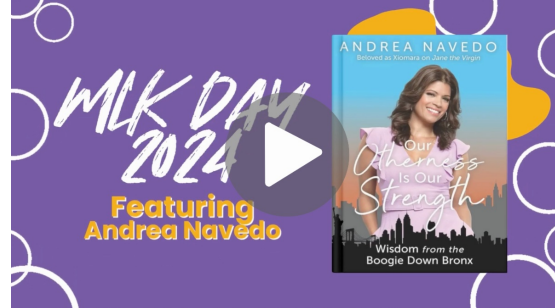
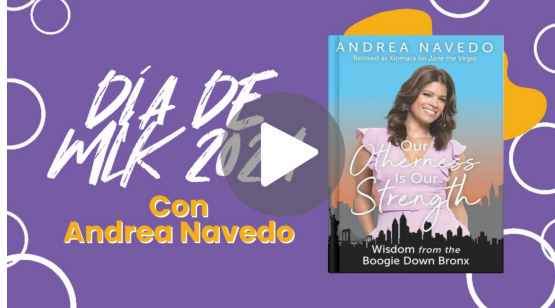
SUPPORT MTB

MLK Day Event with Andrea Navedo



Every year, we hold an event on Martin Luther King, Jr. Day. This year, we partnered with the local United Passaic Organization (who were launching their mobile food truck) and welcomed Andrea Navedo, from *Jane the Virgin*. The event allowed our students to combine service to the Passaic community with inspiration from Navedo who shared words of wisdom from her book, *Our Otherness is Our Strength*.

Watch our video about the event (in Spanish or English):



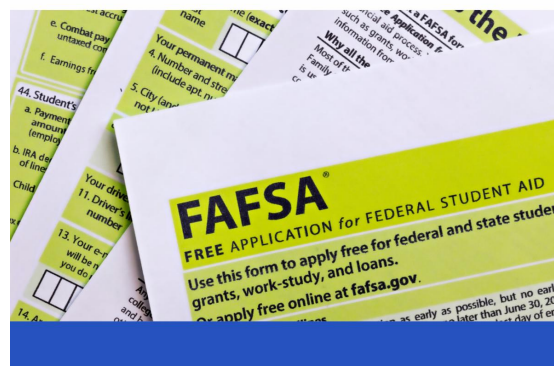
FAFSA TROUBLE

It's a particularly challenging but important time for college access and success programs because of FAFSA trouble. A glitch in the new FAFSA (the Free Application for Federal Student Aid) has to date locked out students whose parents do not have a Social Security number. Read more from MTB President Audrey Fisch about how frustrating this bureaucratic snafu is for many of our MTB high school and college students who have been left unable to complete the application since it opened on December 30.

THE HILL

How bureaucracy destroys dreams for first-generation college students

BY AUDREY FISCH, OPINION CONTRIBUTOR - 02/08/24



[READ THE ARTICLE](#)

NEW CRM FOR SUMMER PROGRAM FOR HIGH SCHOOL SENIORS

A grant from the Arman N. Roy Foundation will pay the subscription cost and fund a stipend for one of our College Student Leaders to pilot Campground, a new CRM (customer relationship management) solution for the MTB summer program. Since this implementation will be led by an MTB College Student Leader, it will both develop the MTB organizational infrastructure and capacity and allow one of our students to develop her technical implementation, data analysis, and project management skills.

MTB AND THE FIRST-GEN MADRINA

More Than Bootstraps was featured on Sara Diaz's *The First Gen Madrina* Podcast. Tune in to hear Audrey Fisch (MTB Founder) and Ashley Delgado (one of our inaugural High School Fellows and now a College Student Leader and sophomore at William Paterson University)!

[Listen on Spotify](#)

In this inspiring conversation, Audrey and Ashley share personal stories and discuss obstacles encountered and victories achieved. Immerse yourself in the narratives of triumph over adversity and the transformative impact of educational support.

LISTEN NOW

PODCAST LIVE

New Episode

Supporting First Gens: Audrey and Ashley share the Importance of Breaking Barriers and Building Dreams for Students

Ep. 36

Guest: More Than Bootstraps

THE FIRST GEN
MADRIS

The banner features a circular photo of two women, Audrey and Ashley, in red graduation gowns. One is holding a certificate. The background of the photo includes text like '2023 Graduate' and 'more than bootstraps'. The overall design is purple with white and light purple accents.

2022-2023 IMPACT REPORT

You helped us turn MTB from an idea into a reality. We are now in our fourth year of programming and beginning to prepare for Year 5. Read about our successes in the 2022-2023 Impact Report.

[READ THE REPORT](#)

Explore...



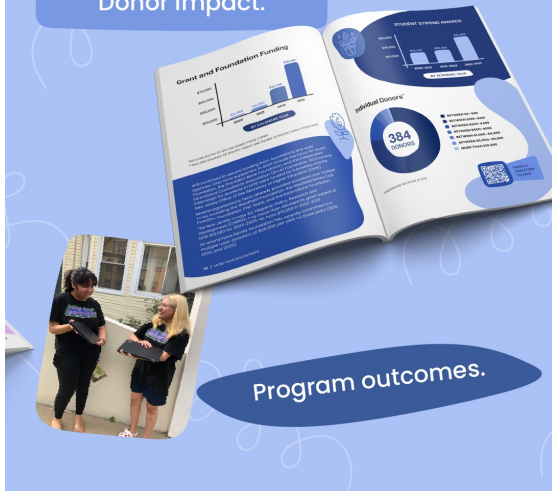
Students' remarkable journeys.



Students' support systems.



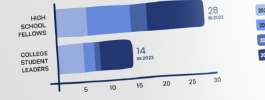
Donor impact.



Program outcomes.

MTB Impact

STUDENTS SERVED (BY YEAR)



Ideally, students continue with MTB through junior and senior year of high school and four years of college.

Class of '22:

25% of Fellows applied to become a mentor after graduation

Class of '23:

75% of Fellows applied to become a mentor after graduation

COLLEGE APPLICATION RATES

MTB saw a substantial increase in the number of college applications and breadth of institutions to which our Fellows applied, which reflects our success in helping students understand their options and choices in higher education.

MTB'S FIRST COHORT OF HIGH SCHOOL FELLOWS:
 100% students applied to 8 or more institutions
 100% applied to at least one public institution
 100% applied to at least one private institution

MTB'S SECOND COHORT OF HIGH SCHOOL FELLOWS:
 100% students applied to 8 or more institutions
 48% students applied to more than 10 institutions
 100% applied to a mix of public and private institutions
 80% students applied to at least one out-of-state institution
 80% institutions are private institutions
 100% applied to an out-of-state institution

100%

of Class of '22 and '23 grads matriculated into college

of Class of '21-'23 students graduated high school

Explore our **Impact Report.**

SUPPORT MTB

Audrey Fisch, Ph.D., President, More Than Bootstraps
audrey@morethanbootstraps.org | (908) 397-0893



Share This Email



Share This Email



Share This Email

MTB was founded by educators who understand the significant obstacles that first-generation college students face on their journey into and through higher education. To succeed, they need **More Than Bootstraps**

More Than Bootstraps | 421 Highland Avenue, Westfield, NJ 07090

[Unsubscribe jim@morethanbootstraps.org](mailto:unsubscribe_jim@morethanbootstraps.org)

[Update Profile](#) | [Constant Contact Data Notice](#)

Sent by audrey@morethanbootstraps.org powered by



Try email marketing for free today!