

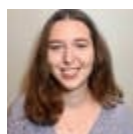
<https://patch.com/new-jersey/westfield/westfield-foundation-awards-1-5k-more-bootstraps>



[Community Corner](#)

Westfield Foundation Awards \$1.5K To 'More Than Bootstraps'

The money from the foundation will go toward helping low income, first-generation students gain access to and succeed in higher education.



Remy Samuels, Patch Staff

Posted Sat, Feb 19, 2022 at 12:01 pm ET



More Than Bootstraps first launched in Westfield on Martin Luther King Jr. Day in 2020. (Shutterstock)

WESTFIELD, NJ – Westfield Foundation recently gave \$1,500 to More Than Bootstraps – a New Jersey non-profit dedicated to helping low-income, first-generation students access and succeed in higher education.

The Westfield Foundation provides funding in support of arts, health, aging, historic preservation, social services and civil projects all in the local community. The founder of More Than Bootstrap is long-time Westfield resident and college professor, Audrey Fisch, who helps address the challenges of first-generation students.

Fisch founded the non-profit with colleagues in K-12 and higher education. MTB builds on strengths that these first-generation students already have to create a sustainable pathway to and through college.

"We are grateful to the Westfield Foundation for this second grant and for their recognition of our program's contribution to the higher-education success of first-generation students," Fisch said.

The organization provides high school students with "near-peer mentors", who are current college students from their community. These mentors meet weekly with their high school mentees and follow a curriculum of activities focused on personal and professional development, college and financial aid awareness and communication with families.

Once a month, the full group convenes for workshops and guest presentations. MTB launched in Westfield on Martin Luther King, Jr. Day, 2020.

Donations from individuals, including many Westfield residents, and local organizations, such as Temple Emanu-El of Westfield, the Westfield-based Union Innovation NJ Alliance ([UNINJA](#)) and the Westfield Foundation, provided resources to support five college student leaders and six high school fellows in the first year of operation.

Additionally, in the past year, MTB has expanded to serve 12 high school fellows and six college student leaders. The grant from the Westfield Foundation will fund the monthly stipend for two MTB high school fellows for one year and allow the organization to add more underrepresented students to the program.

To learn more about the non-profit, visit [MTB's website](#).